

WINTERSWEET

**2025**  
Roller skates Catalog



# Table of contents



**Wintersweet** 02

**Complete Skates** 12  
Sweet Pea \ Iris \ Eden

**Accessories** 26  
Wheels \ Plates \ Toe Stops \ Toe Caps & Guards \ Laces

**Protections** 34  
Wintersweet Helmet \ Wintersweet Protection

**Bag & Leash** 36  
Basic Bag \ Elastic Leash

**Tools** 38  
Bearing Press \ T-tool

**Product Index** 39





# WINTERSWEET

**Roller skates Catalog**





# WINTERSWEET

## WINTERSWEET

Born in the California sunshine, Wintersweet celebrates individuality and freedom of expression. We are dedicated to providing premium roller skates and accessories for fashion-forward, quality-conscious individuals of all ages.

## OUR VISION

Our journey began with a vision to create a platform for self-expression through the art of roller skating. Collaborating closely with skaters, artists, we craft and test each product with meticulous attention to detail to cater to the soulful desires of those seeking a means to express themselves on the go.

## OUR SPIRIT

Our ethos is rooted in the essence of celebrating the freedom to be who you are and express yourself without inhibition. Each pair of skates is a testament to our commitment to quality and authenticity, carefully designed and tested by a diverse community of individuals who share a common love for the art of roller skating.

# What Make Us Unique?

---







## TRENDSETTING DESIGN

Stand out in the crowd as the embodiment of enthusiasm, infused with elements that resonate with vibrant emotions, our products exude passionate and lively energy.

## DYNAMIC MATERIALS

Our commitment to sustainability and adaptability is evident in the rich and ever-changing materials we employ.

## LATEST TECHNIQUES

We meticulously incorporate the latest techniques into our product design and production processes, which guaranteeing a level of quality and performance that sets us apart.



## Heat Tech Forming

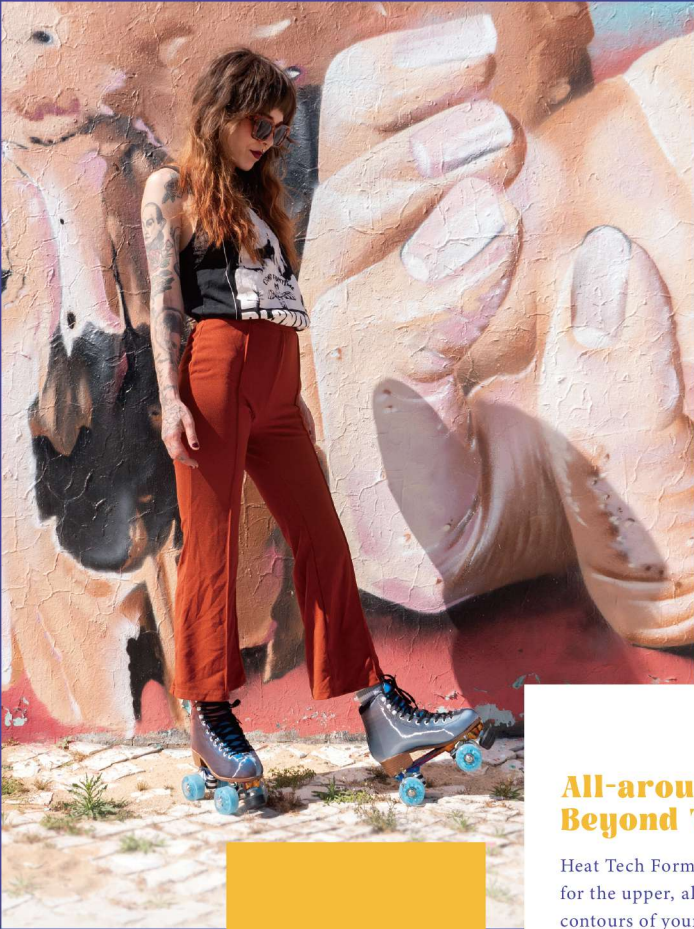
### A REVOLUTIONARY TECH

Heat Tech Forming is not just a process,  
it's a journey that transforms quad skates into  
a personalized expression of your individuality.



• TEMPERO  
DIABETICO •





## All-around Thermoplasticity Beyond Tradition

Heat Tech Forming offers a complete thermoplastic transformation for the upper, allowing the entire boot to mold to the natural contours of your feet, unlike traditional techniques that focus only on heating the shell.

## Repetitive Moldability for Extended Lifespan

Heat Tech Forming isn't just about the present, it's also an investment in the future. The attribute of repetitively molding the boot not only tailors the footwear to your evolving needs but also significantly increases its lifespan.

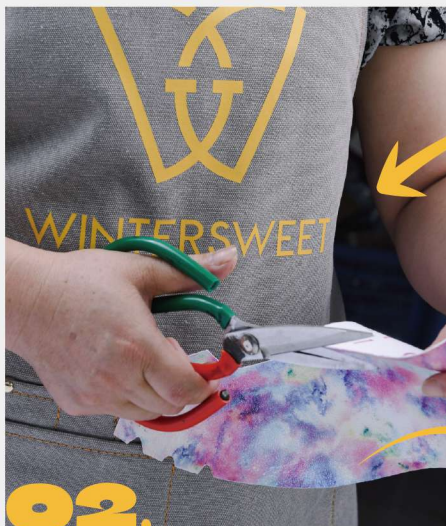
## User-Friendly Operation

Innovation should be accessible to everyone. The Heat Tech Forming process is simple: just dip your skates in 80-degree hot water to activate the transformative power of Transtic.

# Craftsmanship







## 02. Cutting Material

We meticulously select high-quality materials for each component of the skate. The boots are crafted from premium leather or synthetic fabrics, ensuring both comfort and durability. At Wintersweet, we are dedicated to creating original designs and patterns that set new trends in both style and performance. Each piece of fabric is cut with precision using advanced cutting tools, shaping the materials according to our design specifications. This step guarantees that every part—from the boot panels to the sole and frame fits together seamlessly.



## 01. Design and planning

Every roller skate begins with a thoughtful design process. Our team of designers crafts detailed blueprints that prioritize ergonomics, style, and performance. This includes elements like boot shape, frame structure, and wheel alignment, all engineered for maximum comfort and durability. Here, you can see how the blueprints guide the cutting of the boot shape from the fabric.



## 03. Stitching & Assembly

The boot assembly features expertly crafted stitching that unites the various fabric layers, including the exterior, interior padding, and protective reinforcements. This precision stitching ensures durability and strength, resulting in a flawless finish for every skate.



## 04. Punching holes and placing eyelids

After the upper part of the boot has been stitched together, we carefully mark the positions for the lace holes and eyelids. These holes are then punched and fitted, with their number and spacing tailored to the skate design and the level of support required.



## 05. Bonding

High-strength adhesive techniques are skillfully utilized to securely bond each component of the skate. This process guarantees optimal comfort, support, and lasting durability.



**06.**

## Adding Adhesive

Once the boot is complete, we prepare both surfaces of the sole and apply our high-strength adhesive. The sole is then precisely positioned and firmly pressed into place, eliminating any air bubbles for a seamless fit. After securing the sole, we cure the adhesive under specialized conditions to create a strong and enduring bond.



**07.**

## Baking under a red light

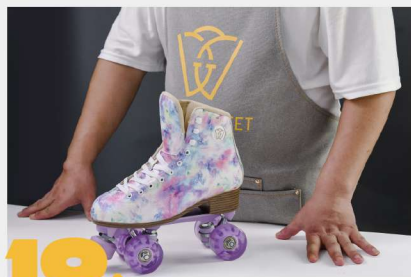
After the adhesive is applied, the skates are baked under a red light. This curing process strengthens the bond, enhancing the overall durability of the final product.



**08.**

## Reinforcing

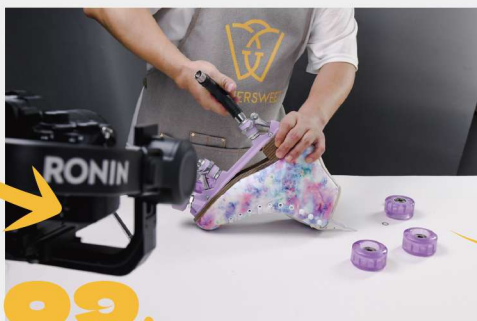
Lasting involves shaping the boot by placing the upper part over a "last" (a foot-shaped mold). This process stretches the leather to form the final shape of the boot, ensuring it fits snugly around the foot. The upper material is pulled tightly around the last, smoothing out any wrinkles and setting the structure of the skate. After the boot and sole are attached, the next step is reinforcing the bond between the upper leather (and inner lining) and the sole.



**10.**

## Final Product and Shipping

Once the skate is complete, we conduct a thorough quality check. Each component is assessed for durability, alignment, and overall performance, ensuring that every pair upholds our commitment to quality and comfort. After inspections, the skates are packaged with care to ensure they arrive safely. They're then shipped out, ready for customers to enjoy on the rink or the streets.



**09.**


## Mounting

The boot is carefully attached to the skate frame. This part is critical as it determines the skate's balance and stability. The frame is mounted securely to ensure smooth rolling and proper weight distribution. Once the frame is attached, the wheels and bearings are installed. The bearings are inserted into the wheels, and then each wheel is secured to the frame. We use high-precision bearings for a smoother glide and better speed control.





**Not  
Just  
A  
Hobby  
.  
But  
A  
Lifestyle  
!**

A woman with long brown hair, bangs, and tattoos is sitting on a white plastic chair outdoors. She is wearing large, dark sunglasses and has a nose ring. She is wearing a red blazer and blue roller skates with black laces. The background is a white wall with a large black letter 'A' and a black vertical line. To the right, there is a small table with a white cup and a bottle of water. The ground is paved with cobblestones.

# COMPLETE SKATES



# WINTERSWEET



# Sweet Pea

WINTERSWEET



**Article Number:** WRS-SP



**Color:**  
Flower



# Sweet Pea



## BONUS

Skate tool  
included in box



## Size:

● US 4 | 4.5 | 5.5 | 6 | 7 | 7.5 | 8.5 | 9 | 10

● EU 35 | 36 | 37 | 38 | 39 | 40 | 41 | 42 | 43

## Fun Fact:

Sweet Pea flowers symbolize blissful pleasure, good wishes, kindness, gratitude, and friendship qualities that enhance every skating journey.

## Features:

- Glitter wheels sparkle up your night rides.
- Splash-resistant upper to keep your skates cleaner for longer.
- Chic appearance to showcase your style with elegant grace.

## Specs:

- Microfiber upper, PVC heel and sole
- Breathable abrasion-resistant mesh and memory fit foam
- Lightweight Aluminum Baseplate
- Premier TWINCAM bearing
- Glitter Wheels Pink 58\*32mm 82A
- Adjustable Purple Toe stop







# Sweet Pea







WINTERSWEET



**Article Number:** WRS-IRIS-PUR/MINT



**Color:**  
Purple/ Mint

**Article Number:** WRS-IRIS-BK/PUR



**Color:**  
Black/ Purple

**Iris**





### BONUS

Skate tool  
included in box



## Size:

● US 4 | 4.5 | 5.5 | 6 | 7 | 7.5 | 8.5 | 9 | 10

● EU 35 | 36 | 37 | 38 | 39 | 40 | 41 | 42 | 43

## Fun Fact:

Iris flowers symbolize love and growth — qualities that inspire us in life and skating.

## Features:

- Luxurious suede upper, offering a firm and elegant touch for superior comfort and style.
- Glitter wheels, adding sparkle to every ride after sunset.

## Specifications:

- Suede upper, PVC heel and sole
- Breathable abrasion-resistant mesh and memory-fit foam
- Lightweight Aluminum Baseplate
- Premier Twincam bearing
- Glitter Wheels purple or mint 58mm 82A
- Adjustable Purple Toe stop





Iris



STYLING





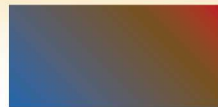


# Eden

WINTERSWEET



**Article Number:** WRS-EDEN



**Color:**  
Iridescent



# Eden



## BONUS

Skate tool  
included in box



Heat Tech Forming

## Size:

● US 4 | 4.5 | 5.5 | 6 | 7 | 7.5 | 8.5 | 9 | 10

● EU 35 | 36 | 37 | 38 | 39 | 40 | 41 | 42 | 43

## Fun Fact:

Eden symbolizes perfect harmony. In skate terms, synchronicity would describe how all the elements of the skate work together seamlessly and effortlessly, creating an experience that feels perfectly coordinated and in harmony with your movements.

## Features:

- Heat Forming Tech, simple operation and providing a perfect and customized fitting
- Iridescent TPU upper, the color changes from every viewing angle

## Specifications:

- TPU upper, PVC heel and sole
- Breathable abrasion-resistant mesh and memory fit foam
- Lightweight Aluminum Baseplate
- Premier Twincam bearing
- High Rebound PU Wheels 58\*32mm 82A
- Adjustable Black Toe stop





**Eden**





WINTERSWEET



# Accessories

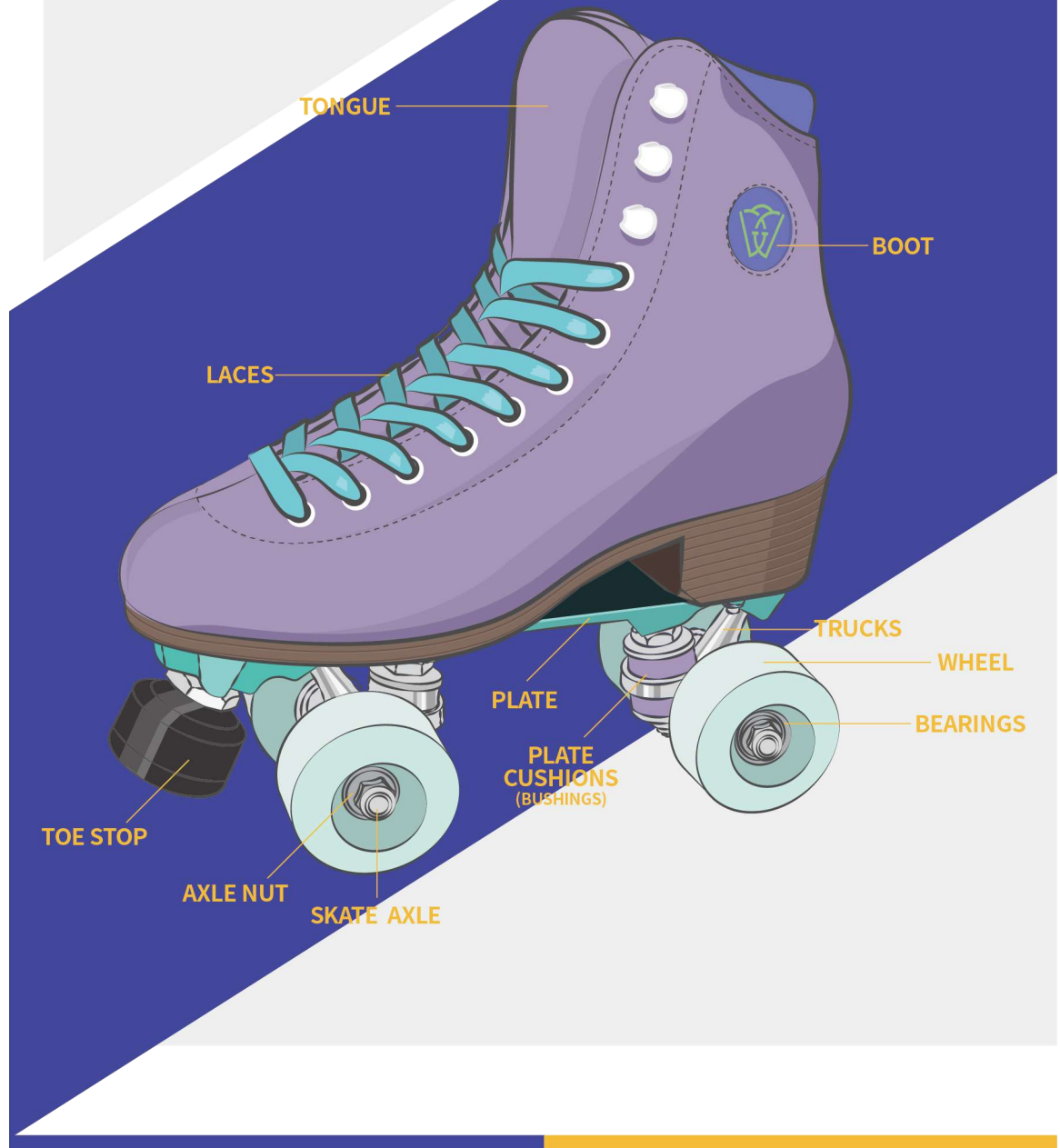
---



  
WINTERSWEET



# Skate Parts





# Wheels

## Glitter Wheels

### Features:

- Self-illuminating wheels powered by magnetic induction, no batteries required
- The glitter capability enhances visibility and safety in low-light conditions
- Transparent design with embedded glitter for unique daytime aesthetics
- Durable construction suitable for various skating styles
- Available in three vibrant color options for personalized style

### Specification:

- Recommended Use: Indoor/ Outdoor
- Size: 58\*32mm
- Hardness: 82A
- Material: PU

Article number: WSA-WH-GID-MINT/PK/LAV







# Wheels

## All-Black Wheels

### Features:

- Durable construction for various skating styles
- Sleek all-black design complements any outfit
- Superior shock absorption that turns rough streets into your smooth skating zone

### Specification:

- Recommended Use: Indoor/ Outdoor
- Size: 58\*32mm
- Hardness: 82A
- Material: PU



Article number: WSA-WH-BK



# Plates

## Gradient Plates

### Features:

- CNC aluminum construction for enhanced impact resistance
- Multiple size options to fit a range of boot sizes
- Ultra-lightweight build (851-881g/pair) for reduced skater fatigue
- Precision-engineered for optimal power transfer
- Sleek, modern aesthetic to complement your skate setup
- Compatible with standard quad skate wheels and bearings
- Ideal for various skating styles

### Specification:

- Size: 226/238/250/262mm
- Weight: 851-881g/ pair
- Material: CNC aluminum
- Toe stops: exclude
- Packing: 1 plate, 2 trucks



Article number: WSA-CHASSIS-GRAD







# Toe Stops

## Round Toe Stop

### Features:

- Adjustable for a customized fit and preferred skating experience
- Crafted from premium 85A durometer rubber for optimal performance
- Available in multiple colors for personalized skate customization

### Specification:

- Material: 85A + Rubber
- Size: 5.6\*4.5cm
- Stem length: 26.5MM
- Packing: 2 toe stops and 2 nuts



Article number: WSA-TSR-R-PUR/PK



# Toe Caps & Guards

## Classic Toe Caps

### Features:

- Available in TPU, Suede, and MICROFIBER materials to suit different skating styles
- 1.4mm thickness for optimal protection without bulk
- Three color options for personalized customization
- Easy to install and remove for cleaning or replacement
- Compatible with most roller skate models

### Specification:

- Thickness: 1.4 mm
- Material: TPU/ Suede/ Microfiber

Article number: WSA-TGS-PUR/IRID/FLW



## Leather Toe Guards

Article number: WSA-TGP-

### Features:

- Available in 14 attractive colors for extensive customization options
- Simple installation process requiring no special tools
- Compatible with most roller skate models

### Specification:

- Material: PVC
- Size: 17.2\*5.5 cm
- Thickness: 1.2 mm



YL D.YL L.YL D.GRE PUR BL D.BL D.RD ROSE OR M.GRE M.PUR M.BL BK





# Laces

## Monochrome Laces

### Features:

- Multi-strand tight weave construction for maximum durability
- Available in 3 vibrant color options to suit your personal style
- Durable materials for long-lasting use
- Easy to lace and adjust for a secure fit
- Compatible with roller skates, inline skates, ice skates, and sneakers

### Specification:

- Length: 94.49 inches / 240cm
- Width: 8mm
- Material: Polyester



Article number: WSA-LACE- BK#143 / PUR#3015 / YL#3026





# Protections

## Wintersweet Helmet

### Specification:

- Size: S/M/L
- Outer Material: ABS
- Inner Material: EPS
- Weight: 600g
- Adjustable: Yes



Article number: WSA-HM-BK/YL







# Protections

## Wintersweet Protection

### Specification:

- Size: S/ M/ L
- Material: Polyester and PP
- Weight: 504g
- Packing: 1 pair of knee pads  
1 pair of elbow pads  
1 pair of wrist pads



Article number: WSA-PG-PUR





# Bag & Leash

## Basic Bag

### Features:

- Mesh cloth construction for superior ventilation, keeping your gear dry and odor-free
- Adjustable shoulder straps for comfortable carrying
- Built-in sleeve for secure skate storage

### Specification:

- Size: 9,5\*10,5CM
- Material: Polyester and mesh cloth

Article number: WSA-BP-BK







# Bag & Leash

## Elastic Leash

### Features:

- Hands-free carrying design for effortless transportation
- Elastic for different skate sizes
- Durable construction for long-lasting use
- Compact and lightweight for convenient storage

### Specification:

- Size: 20.50\*1.42"(52X3.6cm)
- Material: Webbing and elastic band



Article number:WSA-LEASH 02-YL



# Tools

## Bearing Press

### Features:

- Compatible with various skate setups
- Durable construction for long-lasting reliability
- Saves time and effort during use



Article number: WSA-BE-PRESS-BN

### Specification:

- Size: 29.5\*8\*13CM
- Material: 6061 Aluminum and Steel Construction
- Net weight: 1023 gram
- Fit for: 608 and 688 bearings and 58mm to 125mm diameters wheels

# Tools

## T-tool

### Specification:

- Size: 9.6\*10.4CM
- Net Weight: 112g
- Material: Steel



Article number: WSA-TOOL-BK

### Including:

- 0.32" (8mm) hex-socket for truck bolts
- 0.53" (13.5mm) hex-socket for axle nuts
- 0.59" (15mm) hex-socket for truck kingpin
- 0.21" (5.5mm) Allen key with Phillips head on the opposite end





# Product Index

---

# skates



**Sweet Pea**



**Eden**



**Iris**  
**Purple/Mint**



**Iris**  
**Black/Purple**



# Accessories



**Gradient  
Plates**



**Classic  
Toe Caps**



**Glitter Wheels**



**All-Black Wheels**



**Round Toe Stop**

# Accessories

## Leather Toe Guards



## Monochrome Laces

# Tools



**T-tool**



**Bearing Press**



# Protections



**Wintersweet  
Helmet**

**Wintersweet  
Protection**



# Bag & Leash



**Basic Bag**



**Elastic Leash**



WINTERSWEET



@WinterSweet-n2e



Wintersweet



@wintersweet.skates





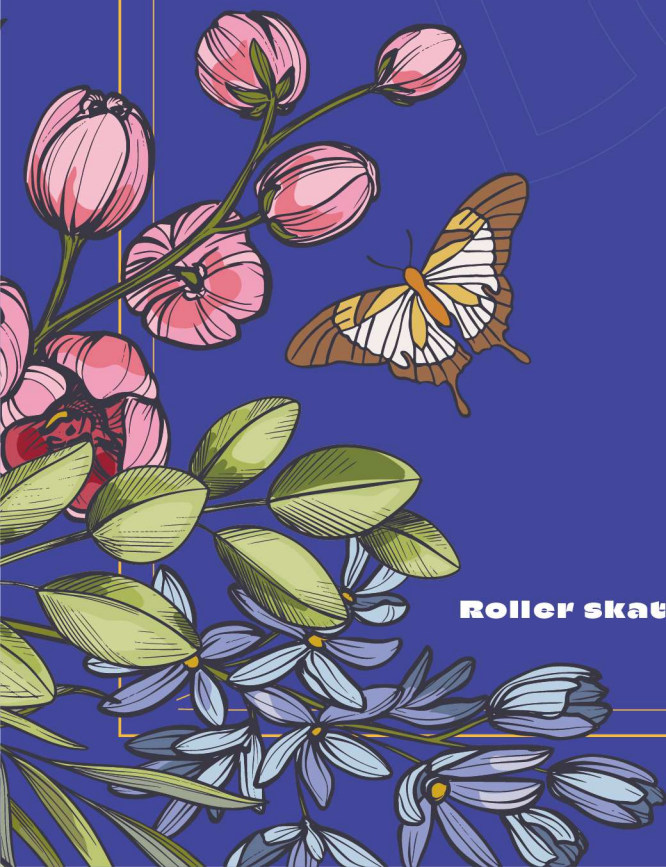
**SkateBeast Sport Technology LLC**  
212 Technology Drive, Suite W, Irvine, CA 92618

[www.wintersweetskates.com](http://www.wintersweetskates.com)





# WINTERSWEET



**Roller skates Catalog**